



GAT MONTHLY MEMBERSHIP PROGRESS REPORT

Results as of: 3/31/2022

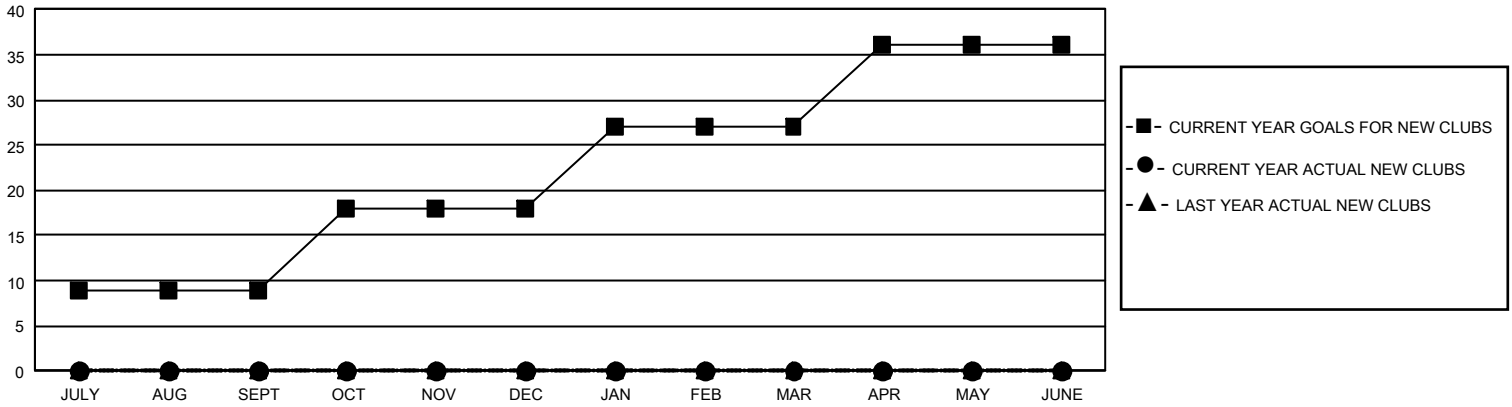
GMT Constitutional Area 5 - C, Group C

REPORT DOES NOT INCLUDE CLUBS IN UNDISTRICTED AREAS.

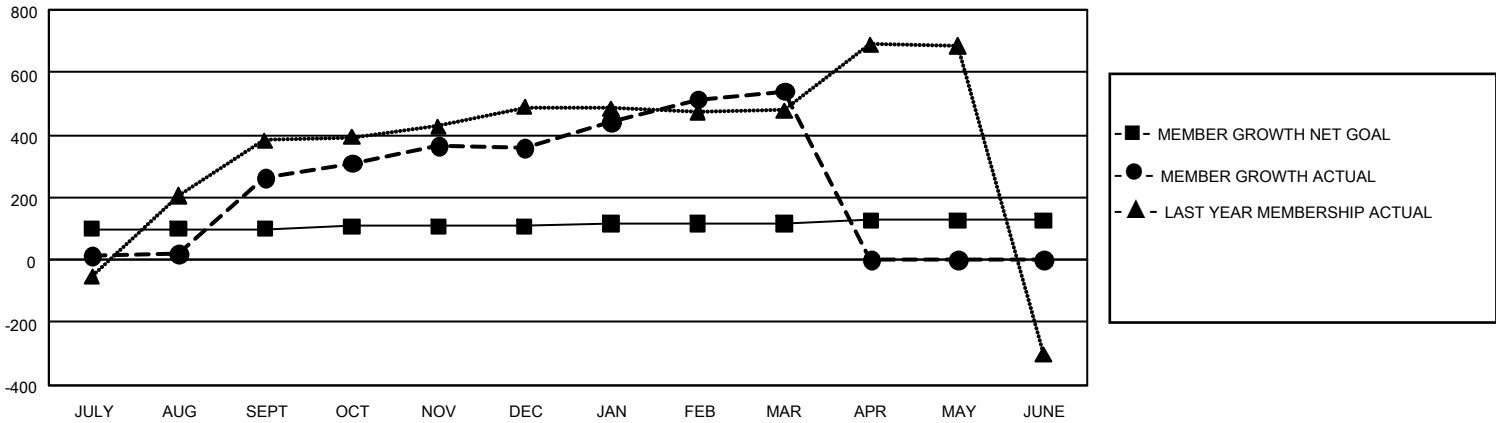
Clubs			
RESULTS FOR 2021-2022			
QUARTER	NEW CLUB GOAL	NEW CLUBS	DROPPED CLUBS
JULY/AUG/SEPT	27	0	9
OCT/NOV/DEC	27	0	3
JAN/FEB/MAR	27	0	0
APR/MAY/JUNE	27	0	0

Members			
RESULTS FOR 2021-2022			
QUARTER	MEMBER GROWTH NET GOAL	MEMBER GROWTH ACTUAL	DROPPED MEMBERS ACTUAL (including transfers)
JULY/AUG/SEPT	99	405	91
OCT/NOV/DEC	9	323	90
JAN/FEB/MAR	9	248	16
APR/MAY/JUNE	9	0	0

GOALS AND ACTUAL NEW CLUBS CUMULATIVE



GOALS AND ACTUAL MEMBERS CUMULATIVE



DROPPED CLUBS: 12	126 CLUBS OF 172 ADDED 1 OR MORE NEW MEMBERS	GENDER DISTRIBUTION	
		MALE 2,264 (56.80%) FEMALE 1,722 (43.20%) NON BINARY 0 (0.00%) PREFER NOT TO ANSWER 0 (0.00%)	
DROPPED MEMBERS		CLICK HERE FOR CUMULATIVE MEMBERSHIP DATA	TOTAL FAMILY UNIT MEMBERS 382
DECEASED 0 CLUB CANCELLED 89 OTHER 108 TOTAL 197			FAMILY MEMBERS PAYING HALF DUES 195